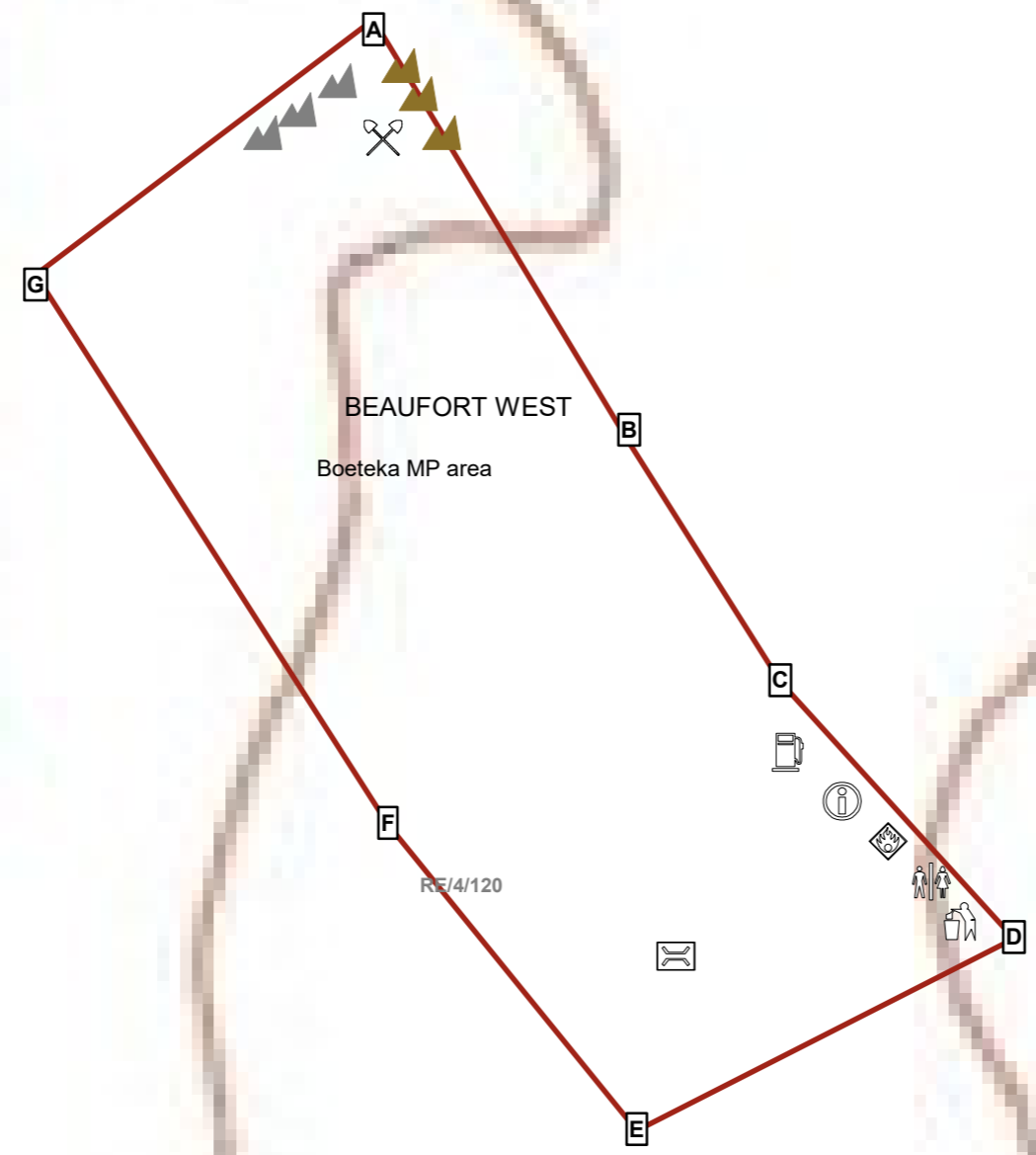
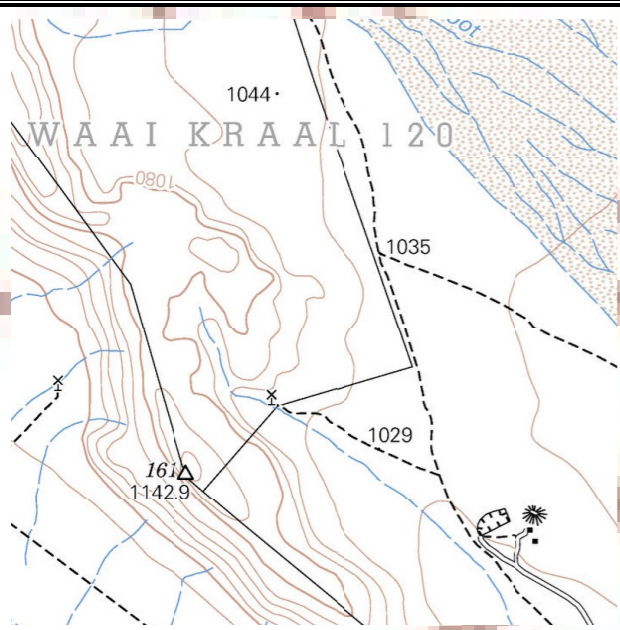


# Site Activities Map

- Legend**
- Magisterial district: Beaufort West
  - △ Parent farms
  - Farm portions
  - Administrative region: Beaufort West
  - District Municipality - Central Karoo
  - Local Municipality - Beaufort West
  - Ward no - 2
  - Province - Western Cape
  - Mining Permit
  - ✂ Mobile Crusher plant
  - ▲ Topsoil Stockpile
  - ▲ Overburden Stockpile
  - ☛ Diesel Storage area
  - ⓘ Mobile site office
  - Ⓢ Oil storage area (bunded)
  - ♿ Site toilet
  - ♻ Waste Storage Area
  - ⚖ Weighbridge



BEAUFORT WEST  
Boeteka MP area

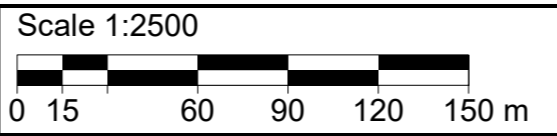
RF/4/120

Central Karoo

BEAUFORT WEST  
2

Beaufort West

WAAI KRAAL 120



**T3222BB**



Please take note that the coordinates were derived from a GIS and not physically surveyed and is therefore an estimation only.

Proposed mining area coordinates:  
 A-32.181274°S; 22.828883°E  
 B-32.182551°S; 22.829792°E  
 C-32.183272°S; 22.830329°E  
 D-32.184047°S; 22.831159°E  
 E-32.184626°S; 22.829818°E  
 F-32.183703°S; 22.828935°E  
 G-32.182044°S; 22.827683°E  
 A-32.181274°S; 22.828883°E

A 32°10'52.586"S; 22°49'43.979"E  
 B 32°10'57.184"S; 22°49'47.251"E  
 C 32°10'59.779"S; 22°49'49.184"E  
 D 32°11'2.569"S; 22°49'52.172"E  
 E 32°11'4.654"S; 22°49'47.345"E  
 F 32°11'1.331"S; 22°49'44.166"E  
 G 32°10'55.358"S; 22°49'39.659"E

Mining permit application area:  
4.9 ha

Client:

Boeteka Doleriet  
(Pty) Ltd  
2017/316732/07

Consultant:

